



PRESS RELEASE

JULY 2021

FROM AFAR:

TRAVELLING MATERIALS AND OBJECTS

EXHIBITION AT THE PETITE GALERIE
22 SEPTEMBER 2021
THROUGH 4 JULY 2022

Starting 22 September 2021, the Louvre's Petite Galerie – a space dedicated to art history outreach – invites you on a journey through time and around the world with 'From Afar: Travelling Materials and Objects'.

The Petite Galerie's 6th season complements the cycle of exhibitions that the museum is dedicating, in 2021/2022, to discoveries and explorations of lands near and far: 'Paris–Athens: The Birth of Modern Greece, 1675–1919' (30 September 2021–7 February 2022) and 'Pharaoh of Two Lands: The African Epic of the Napatan Kings' (27 April–25 July 2022).

Through travelling materials and objects, the Petite Galerie's new exhibition aims to tell the tale of the world and its peoples by describing exchanges between distant worlds – exchanges often far more ancient than the explorations of the 16th century.

Press contact

Jeanne Scanvic

Jeanne.scanvic@louvre.fr

Phone: + 33 (0)1 40 20 51 42

Mobile: + 33 (0)6 22 84 55 52



MATERIALS BROUGHT FROM THE ENDS OF THE EARTH

From deepest antiquity, carnelian, lapis lazuli, ebony, and ivory circulated along trade routes: these materials were even more precious because they came from afar. Their fascination was enriched by the myths surrounding their origin. Their use became a manifestation of prestige, and the meaning of the works of art that employed them was thus enriched, modified, amplified. From the *Head of Gudea, Prince of Lagash* to a small lapis lazuli bead in the shape of a frog, the exhibition presents these materials in great variety.

IVORY SCULPTURE: CARVING THE ELEPHANT'S TUSK

Among the many materials supplied by nature to art are the teeth of large animals – hippopotamus, boar, narwhal, mammoth, and elephant. As part of the Petite Galerie's accessibility outreach, this year visitors will have the opportunity to touch an elephant's tusk.

PORTRAITS OF ANIMALS COME FROM AFAR

Not only stones, shells, and plants travelled between continents; so did live animals, often for political ends. The populace as well as artists discovered ostriches, giraffes, and elephants, which became objects of fascination. Manmade objects followed the same routes; beyond Europeans' well-known yen for exoticism, this exhibition shows that these multiple round trips wove a more complex history.



Gudea, Prince of Lagash © RMN-Grand Palais (Louvre Museum) / Franck Raux

AN OBJECT, A STORY

Works of art came to life through the materials chosen by artists, but their story then underwent the hazards of travel, taste, and transformation. Forms, techniques, and themes intertwined to create new objects, reflecting all the complexity of our world as it could be perceived in Europe from the late Middle Ages on. Each work recounts a different story, from the long voyages, often still mysterious, of the Middle Ages, to far-flung trade, to the moment in the 16th century when the world globalized. In the 19th and 20th centuries, military and scientific expeditions provided still other sources of exchange and transfer.



THE STUDIO

In September 2021, the Louvre opens the Studio, a new space dedicated to art and cultural education. Located across from the Petite Galerie, it complements the latter's offerings with workshops and guided activities.

Small lapis lazuli bead in the form of a frog
© Louvre Museum, dist. RMN-GP / Philippe Fuzeau

CUSTOMIZED DIGITAL TOOLS

A dedicated website (petitegalerie.louvre.fr), offering visitor trails for teachers and for professionals working in the social sector and accompanying disabled individuals, a virtual tour, a signed tour in LSF (Langue des Signes Françaises), a tour for visually-impaired visitors, and additional information about featured artworks, allowing visitors to plan and make the most of their time at the exhibition. As every year, visitor trails through the museum collections expand upon the theme of the Petite Galerie exhibition.

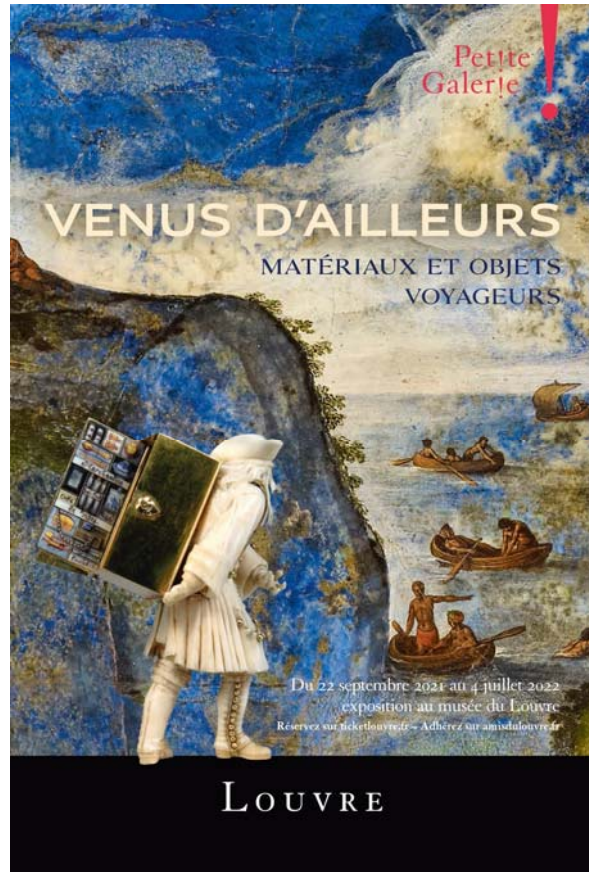
ABOUT THE LOUVRE'S PETITE GALERIE

Since 2015, the Louvre's Petite Galerie has provided an annual opportunity for young people and those accompanying them (parents, teachers, guides) to explore a theme through major works, drawn from prehistory through contemporary art. Visitors explore an exhibition that, depending on its theme, may combine painting, sculpture, graphic art, or other art objects with arts not shown in the museum, such as music, theatre, or dance, reflecting the diversity of artistic creation. Thanks to an inventive scenography deploying light and colours, and an innovative outreach approach, visitors may learn to look at a work, compare it to another, ponder the artist's intentions, and develop their general culture, critical intelligence, and imagination.

Also accessible online and offsite, the Petite Galerie gives visitors the keys to observing and understanding artworks, making the museum visit a moment of pleasure and discovery.

SPECIAL GUEST ART: MUSIC

Every year, the Petite Galerie hosts an art that is not shown in the museum. This year, music makes the exhibition sing, with a programme at the Louvre auditorium.



Exhibition curators: Philippe Malgouyres, curator at the Department of Decorative Arts, Musée du Louvre, and Jean-Luc Martinez, honorary president of the Musée du Louvre

Project manager: Florence Dinet, Musée du Louvre

EXHIBITION CATALOGUE

Edited by Philippe Malgouyres and Jean-Luc Martinez, with Florence Dinet

Co-published by: Musée du Louvre Editions and Editions du Seuil

Bound, 192 pages, €32

AT THE LOUVRE AUDITORIUM

Presentation of the exhibition

FRIDAY, 1 OCTOBER, 12:30 P.M.

by Philippe Malgouyres, curator of the exhibition

ON THE SPECIAL GUEST ART: MUSIC

Odysseys

SUNDAY, 10 OCTOBER, 8 P.M.

Alexandra Soumm, violin Illya Amar, vibraphone

Béla Bartók / Zoltán Székely

Six Romanian Folk Dances

Sz 56

Luciano Berio

Loosin Yelav

Manuel de Falla

Nana from Seven Spanish Folk Songs

Abraham Ellstein

Yidl Mitn Fidl

Joseph Achron

Hebrew Melody

Fernando Obradors

El Vito

Illya Amar

Odysséa: Mome Svie Tié

Traditional Arabic and Yiddish works

Peace on Earth

FRIDAY, 19 NOVEMBER, 8 P.M.

Accentus - Marcus Creed, conductor

Johannes Brahms

Fest-und Gedenksprüche opus 109

Drei Motetten opus 110

Sivan Eldar

After Arethusa, commissioned by accentus

Kaija Saariaho

Reconnaissance, commissioned by accentus, the

November Music Festival, the Donaueschinger

Musiktage, and the Palau de la Música

Arnold Schoenberg

Friede auf Erden

Shared gardens

WEDNESDAY, 8 DECEMBER, 8 P.M.

Lucile Richardot

Les Cris de Paris - Geoffroy Jourdain, conductor

Luciano Berio

Folk Songs

Pierre-Yves Macé

Shared Gardens

FILMS FOR YOUNG PEOPLE

The Adventures of Prince Ahmed

28 OCTOBER, 3 P.M. – AUDITORIUM

dir. Lotte Reiniger, Germany., 1926, 75min

This animated film in cut-paper silhouettes recounts the adventures of Prince Ahmed seeking to marry Princess Pari Banu.

THE STUDIO

WORKSHOPS

The melody of travelling words

27 SEPTEMBER THROUGH 22 OCTOBER – FORUM

Using strips of paper passed through a comptonium, a hand-cranked mechanical musical instrument, discover the sound and music of words.

Make a mother-of-pearl shell

27 SEPTEMBER THROUGH 22 OCTOBER – FORUM

Create a shell inspired by the different examples shown, using mother-of-pearl buttons to refer to shells' materials and especially their mother-of-pearl lining.

FAMILY WORKSHOP

Imaginary maps

25 AND 26 SEPTEMBER AT 2:30 P.M., THEN

SUNDAYS AT 2:30 P.M. AND DURING SCHOOL

HOLIDAYS

Go exploring in the Petite Galerie, then have the whole family put together an imaginary map. A collaborative workshop to delight explorers big and small!

8 years and up.

FAMILY FAIRY TALES

Fairy tales from far away

SUNDAYS AT 10:30 A.M., BEGINNING 25 SEPTEMBER

Embark on a journey across the seas, discovering distant peoples to the sound of music.

6 years and up.

VISUAL MATERIALS FOR PRESS USE

The use of these materials has been negotiated by the Musée du Louvre. They may be used before, during and until the end of the exhibition (22 September 2021–4 July 2022), and exclusively in the context of promoting the exhibition *Venus d'ailleurs. Matériaux et objets voyageurs* (From Afar: The Traveling Materials and Objects)

Please include photo credits and send a copy of your article to: Jeanne.scanvic@louvre.fr



1 - Gudéa, Prince of Lagash © RMN-Grand Palais (Louvre Museum) / Franck Raux



2 - Necklace, carnelian © Louvre Museum, dist. RMN-Grand Palais - Michel Urtado



3 - Small lapis-lazuli bead in the shape of a frog © Louvre Museum, dist. RMN-GP / Philippe Fuzeau



4 - Pearl Fishing in the Indies, oil on lapis lazuli, Tempesta © RMN-Grand Palais (Louvre Museum) - Franck Raux



5 - *Nautilus with metalwork mounting* © RMN-Grand Palais (Louvre Museum) - Jean-Gilles Berizzi



6 - *Bead offered to the moon-god, by the divine king of Ur, Ibbi-Sin, for his life* © RMN-Grand Palais (Louvre Museum) - Franck Raux



7 - *Minerva or Alexander the Great* © Louvre Museum, dist. RMN-Grand Palais - Thierry Ollivier



8 - *Leg of an article of furniture* © Louvre Museum - Christian Décamps



9 - Pyxis bearing the name of *al-Mughira* © Louvre Museum, dist. RMN - Grand Palais - Hugues Dubois



10 - *Clara the Rhinoceros* © RMN - Grand Palais (Louvre Museum) - Martine Beck-Coppola



11 - *Carved tusk* © Quai Branly Museum - Jacques Chirac, Dist. RMN - Grand Palais - Patrick Gries



12 - *Ostrich* © RMN-Grand Palais (Louvre Museum)- Stéphane Maréchalle



13 - Platform shoe © RMN - Grand Palais (Louvre Museum) - Jean-Gilles Berizzi



14 - Casket © RMN-Grand Palais (Louvre Museum) - Michèle Bellot



15 - Statuette of a pedlar © RMN - Grand Palais (Louvre Museum) - Jean-Gilles Berizzi



16 - Pair of ewers © RMN - Grand Palais (Louvre Museum) - Martine Beck-Coppola

The Louvre's Petite Galerie has received the generous support of the Fondation PSA, the sponsorship of the Fonds Handicap & Société by Intégrance, a donation in memory of Anne Cox Chambers by Alex Taylor, the generosity of Madame Krystyna Campbell-Pretty and the Campbell-Pretty family, as well as that of the Fonds Susan D. Diskin, Ph.D., as part of the Louvre endowment fund.



PLAN YOUR VISIT

Museum hours

9 a.m. to 6 p.m. daily, closed Tuesday

All visitors must book a time slot on [ticketlouvre.fr](https://ticket.louvre.fr), including those entitled to free admission.

Admission free for residents of the European Economic Area (UE, Norway, Iceland, and Liechtenstein) under the age of 26.

As of 21 July, **European health passes must be shown by all visitors age 18 and over.** This requirement will be extended to visitors age 12 and over as of 30 August.

More information: www.louvre.fr

Become a member: www.amisdulouvre.fr

FOLLOW THE LOUVRE



#Louvre

#PetiteGalerie

#Venusdailleurs

Press contact

Jeanne Scanvic

Jeanne.scanvic@louvre.fr

Phone: + 33 (0)1 40 20 51 42

Mobile: + 33 (0)6 22 84 55 52